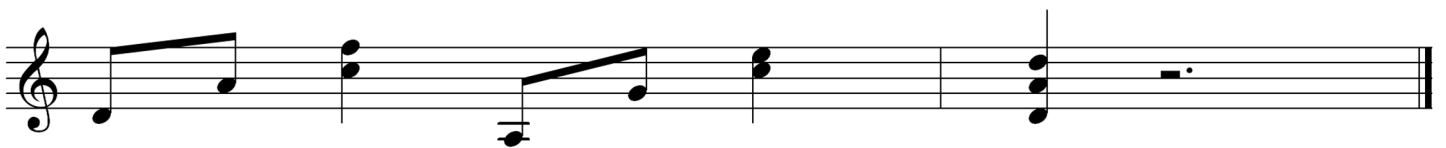
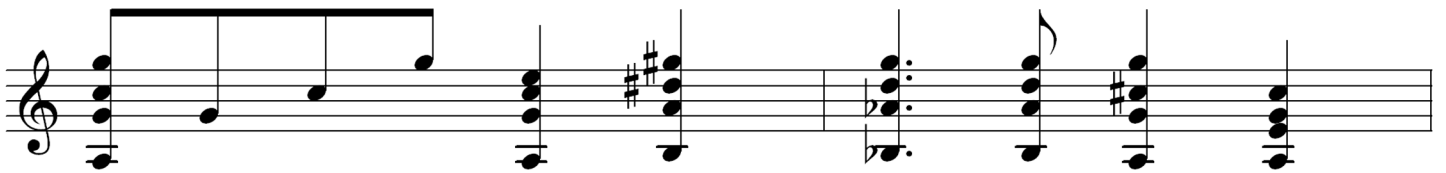
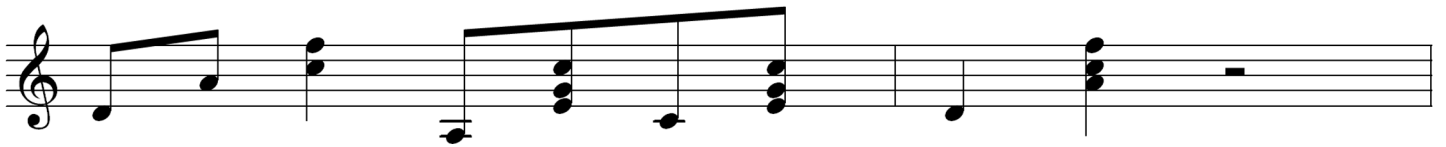
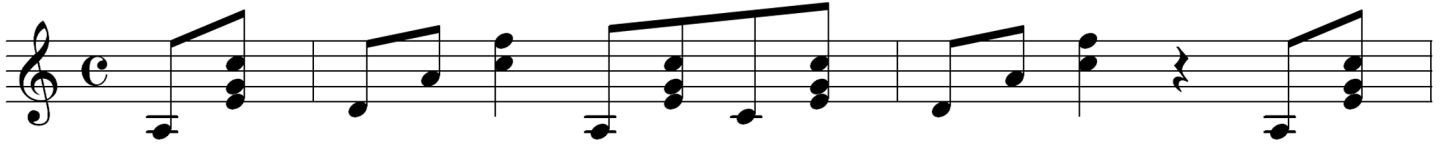


# Ain't no sunshine

*As in "The Eva Cassidy Songbook for Guitar"*

*Words & Music by Bill Withers*



# Ain't no sunshine

*As played on the Album "Time after time"*

*Words & Music by Bill Withers*

The first staff of music is in treble clef with a common time signature (C). It begins with a whole rest, followed by a sequence of eighth notes: G4, A4, B4, A4, G4. This is followed by a quarter rest, then a quarter note G4, and a final chord of G4-B4-D5. The bass line consists of a whole rest, a quarter note G3, a quarter note F3, and a final chord of G3-B3-D4.

The second staff of music continues the melody from the first staff. It starts with a whole rest, followed by eighth notes G4, A4, B4, A4, G4. After a quarter rest and a quarter note G4, it concludes with a chord of G4-B4-D5. The bass line features a whole rest, a quarter note G3, a quarter note F3, and a final chord of G3-B3-D4.

The third staff of music shows a melodic line with eighth notes: G4, A4, B4, A4, G4, F4, E4, D4. The bass line has a whole rest, a quarter note G3, a quarter note F3, and a final chord of G3-B3-D4. A sharp sign (#) is placed above the final chord.

The fourth staff of music features a melodic line with eighth notes: G4, A4, B4, A4, G4, F4, E4, D4. The bass line has a whole rest, a quarter note G3, a quarter note F3, and a final chord of G3-B3-D4. A sharp sign (#) is placed above the first chord.

The fifth staff of music begins with a melodic line: G4, A4, B4, A4, G4. A triplet bracket is placed over the last three notes (B4, A4, G4). The staff ends with a double bar line and a repeat sign. The bass line has a whole rest, a quarter note G3, a quarter note F3, and a final chord of G3-B3-D4.

Ain't no sun - shine when he's gone

The sixth staff of music continues the melody with a whole rest, followed by eighth notes G4, A4, B4, A4, G4. The bass line has a whole rest, a quarter note G3, a quarter note F3, and a final chord of G3-B3-D4. A sharp sign (#) is placed above the first chord.