

# Shine On

As recorded by James Blunt

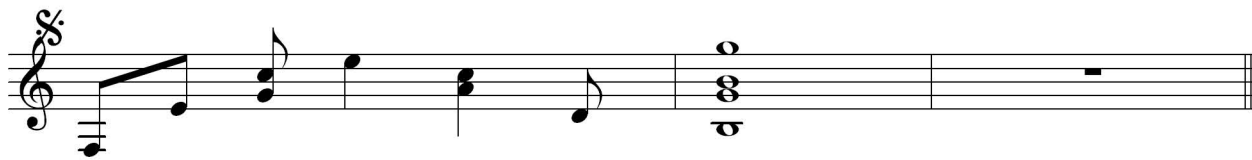
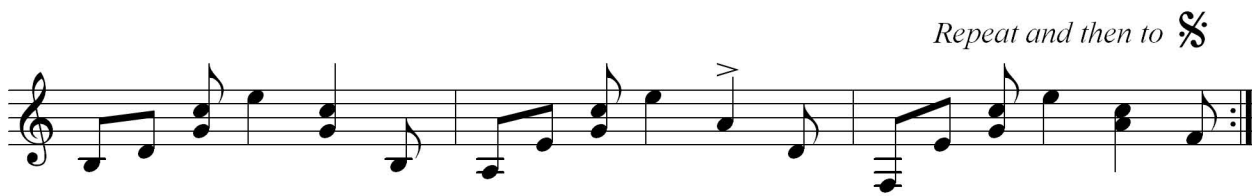
Capo 7th Fret

Intro

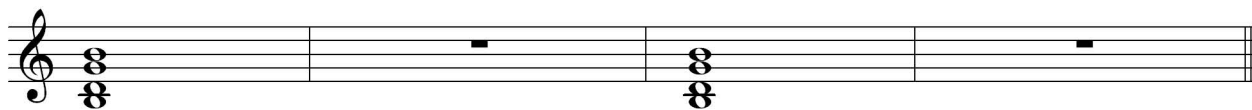
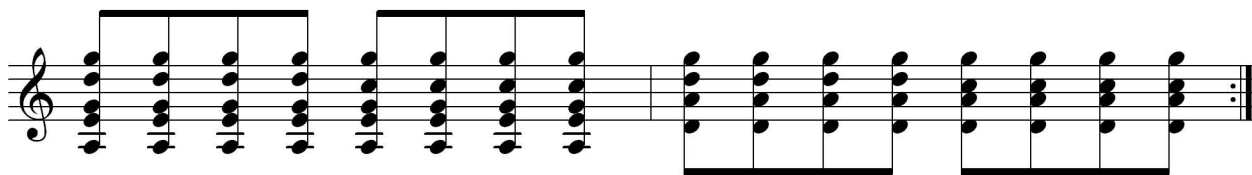
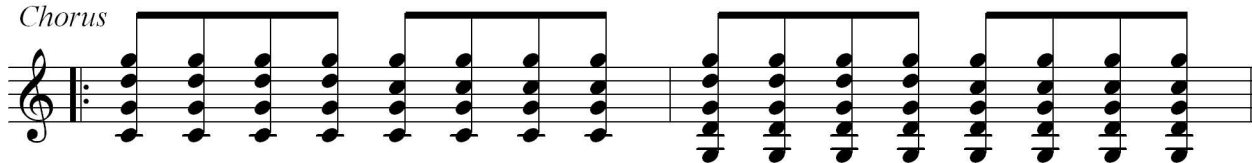
The Intro section consists of three staves of music in 4/4 time. The first staff contains four measures of music, starting with a treble clef and a 4/4 time signature. The second and third staves continue the melody and accompaniment. The music features a mix of eighth and quarter notes, with some notes beamed together. There are several accents (>) placed over notes in the second and third staves. The key signature is one flat (Bb).

Verse

The Verse section consists of three staves of music in 4/4 time. The first staff begins with a repeat sign (double bar line with two dots) and contains four measures. The second and third staves continue the melody and accompaniment. The music features a mix of eighth and quarter notes, with some notes beamed together. There are several accents (>) placed over notes. The key signature is one flat (Bb).



Chorus



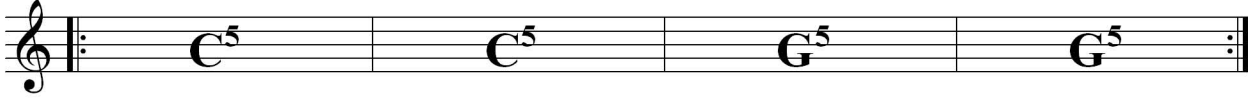
Then: Verse like 2nd time (to  $\text{\$}$ )

Then: Chorus (only first 4 bars with repetition)

Then: ° break ° (4 Bars)

Then: Solo

Solo



Then again chorus like first time & end...